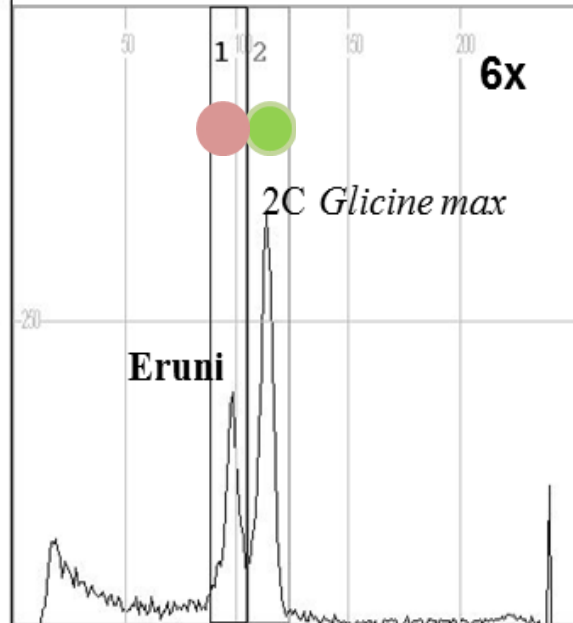
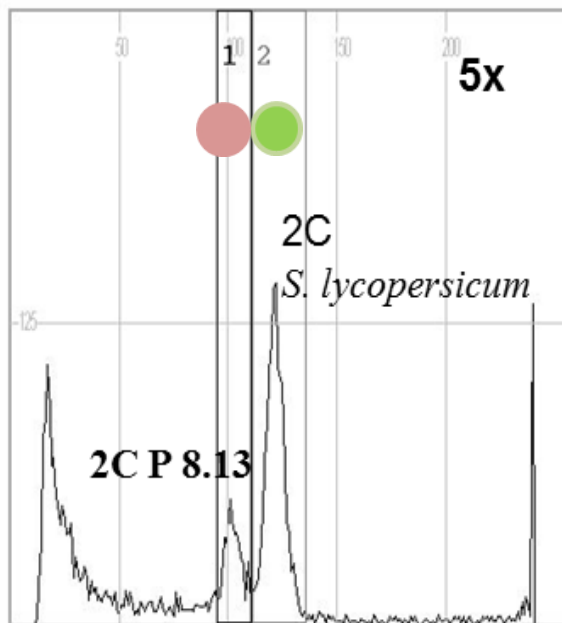
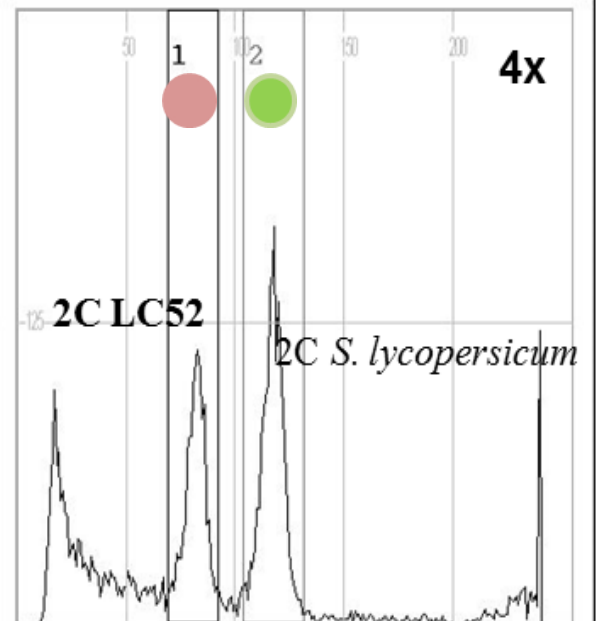
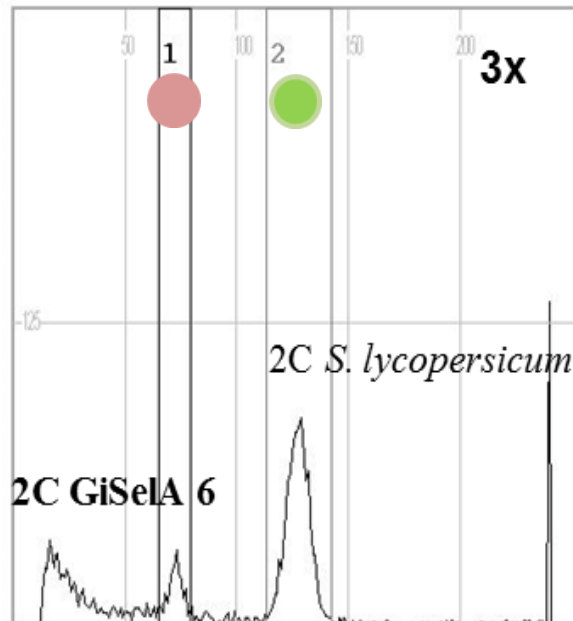
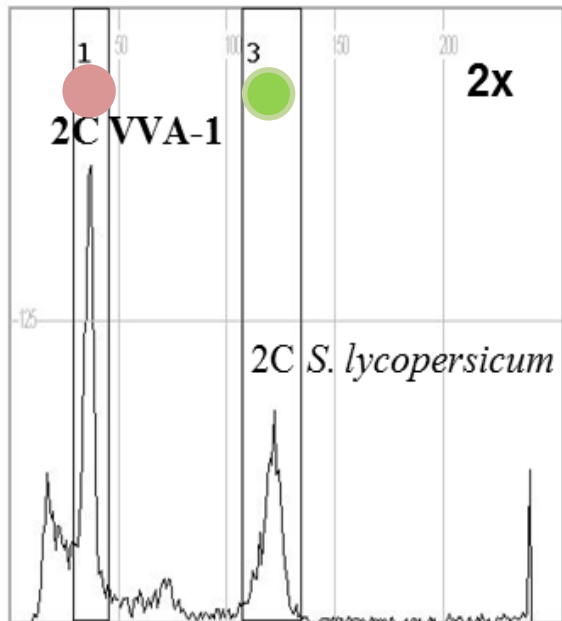


Evaluation of nuclear DNA content / ploidy level and some morphological traits of the rootstocks for plum trees

Małgorzata PODWYSZYŃSKA, Mirosław SITAREK,
Agnieszka MARASEK-CIOŁAKOWSKA

*Research Institute of Horticulture
Konstytucji 3 Maja 1/3, 96-100 Skierniewice, Poland*

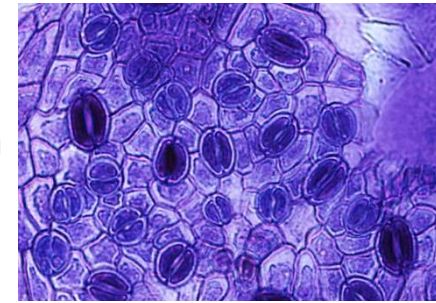
Genotype	Parentage	Nuclear 2C DNA content (pg)	Ploidy level	Leaf area (cm ²)	Vigor level
VVA-1 (Krymsk 1)	<i>P. tomentosa</i> x <i>P. cerasifera</i>	0.61	2x	16.3 d-c	Inter. vigorous
Družba	<i>P. pumila</i> x <i>P. armeniaca</i>	0.65	2x	15.2 d-g	Very vigorous
Ferciana Ishtara	<i>P. salicina</i> 'Belsiana' x (<i>P. cerasifera</i> x <i>P. persica</i>)	0.67	2x	20.9 cd	Vigorous
GF 677	<i>P. persica</i> x <i>P. amygdalus</i>	0.67	2x	26.3 ab	Vigorous
Myrobalan	<i>P. cerasifera</i> var. <i>divaricata</i>	0.68	2x	11.4 g	Very vigor
Fereley Jaspi	<i>P. salicina</i> 'Methley' x <i>P. spinosa</i>)	1.34	4x	14.8 fg	Vigorous
Mariana P 8.13	<i>P. cerasifera</i> x <i>P. munsoniana</i>	1.64	5x	20.1 d	Very vigorous
Pixy	<i>P. insititia</i>	2.07	6x	22.4 bc	Weak
Eruni	<i>P. domestica</i>	2.16	6x	30.8 a	Inter. vigor
GF 655/2	<i>P. insititia</i>	2.21	6x	19.9 c-e	Inter. vigor
St. Julien A	<i>P. insititia</i>	2.23	6x	19.3 c-f	Inter vigor



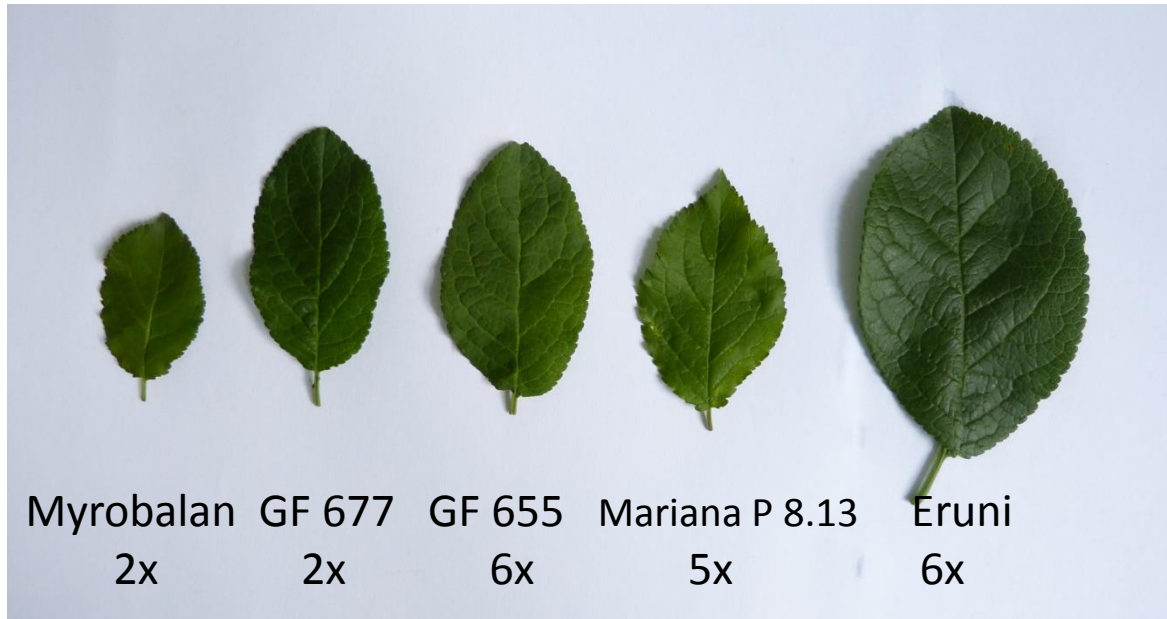
Rootstocks for plum trees

Ploidy level	Leaf area (cm ²)	Stomata length (μm)
2x	18.1 bc	22.5 b
4x	14,8 c	21.3 b
5x	20.1 ab	19.6 c
6x	23.1 a	25.4 a
p	0.00	0.00

Myrobalan
2x



GF 655/2
6x



Thanks for your attention

Acknowledgement: This work was performed in the frame of multiannual programme on preservation of gene bank resources financed by the Polish Ministry of Agriculture and Rural Development: Task 1.3 “Collecting, preservation in *ex situ* collections, cryoconservation, evaluation, documentation and using of gene bank resources of horticultural crops